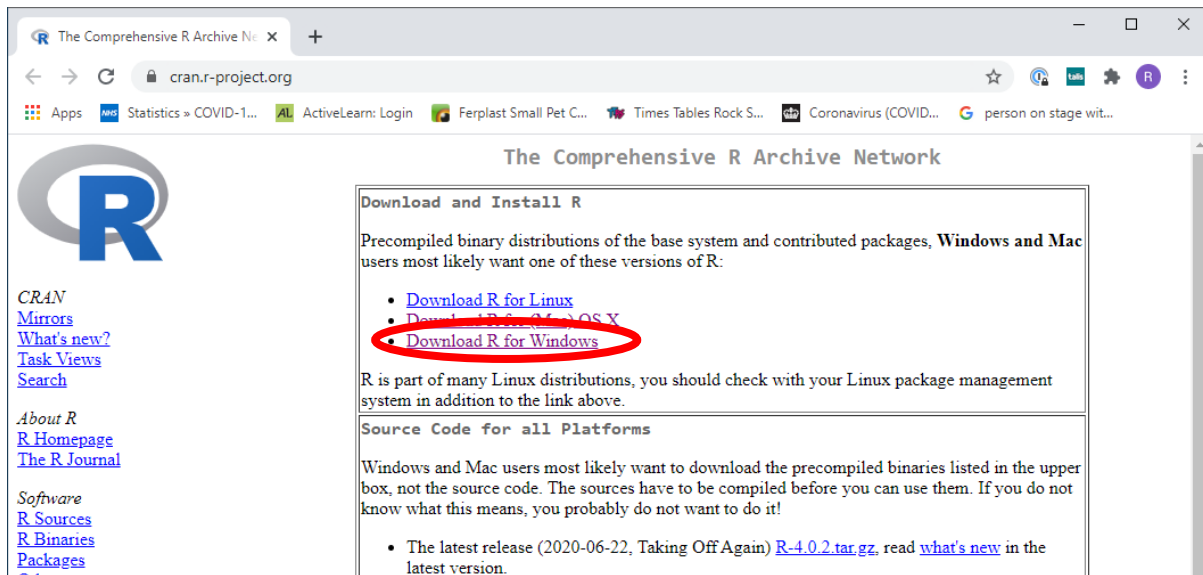


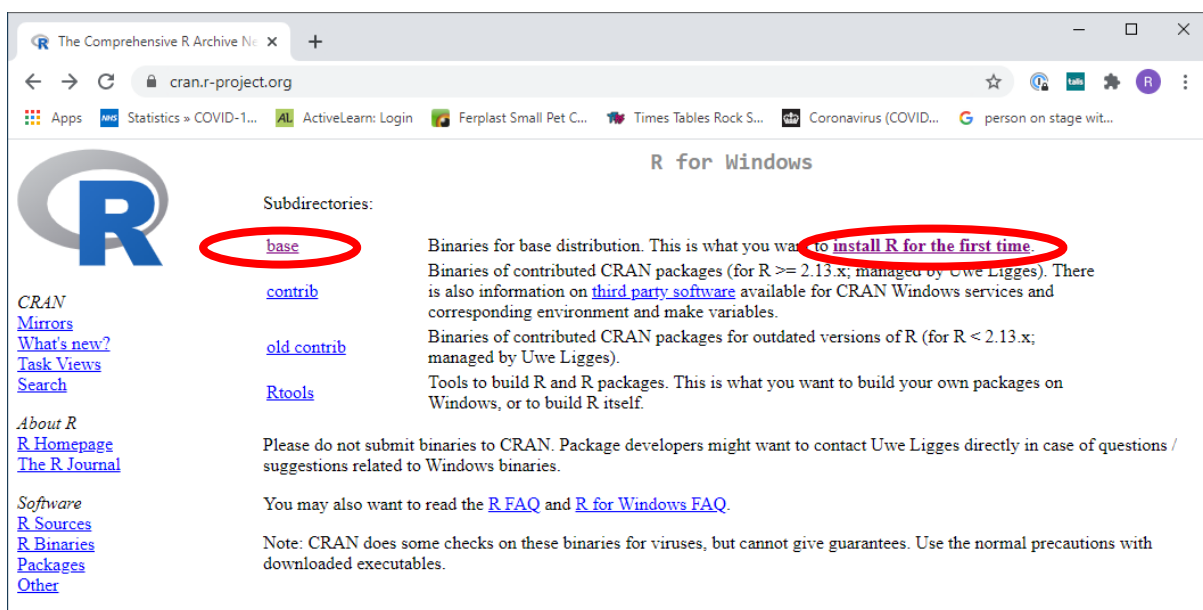
## Installing R and RStudio: Windows Installation

In order to install R and RStudio on a Windows computer please follow these instructions:

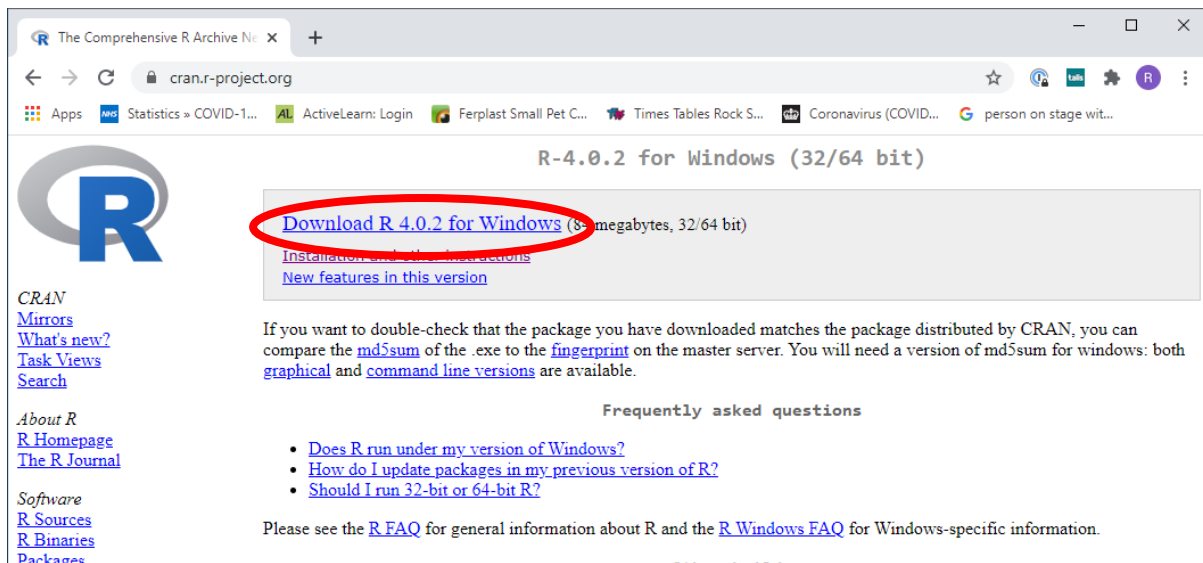
1. Visit the CRAN downloads page: <https://cran.r-project.org/> and select the Download R for Windows option as shown in red on the image below.



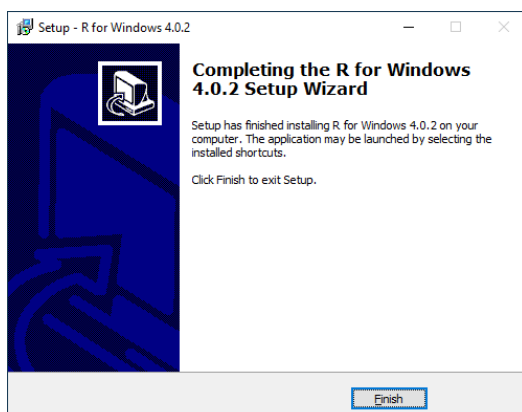
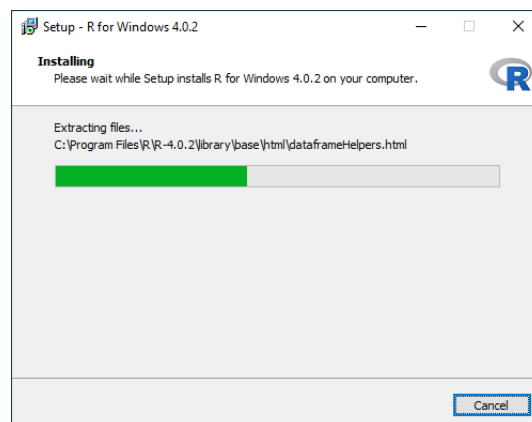
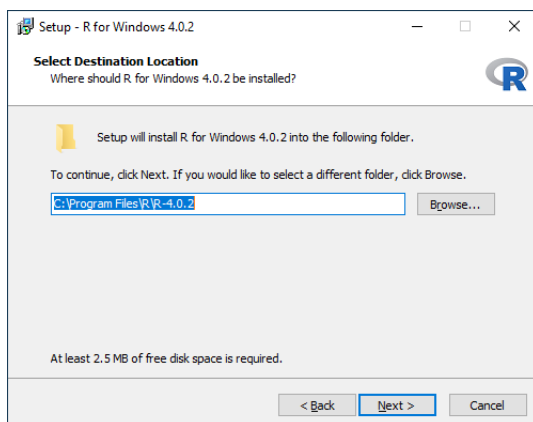
2. Select base or install R for the first time (both link through to the same page)



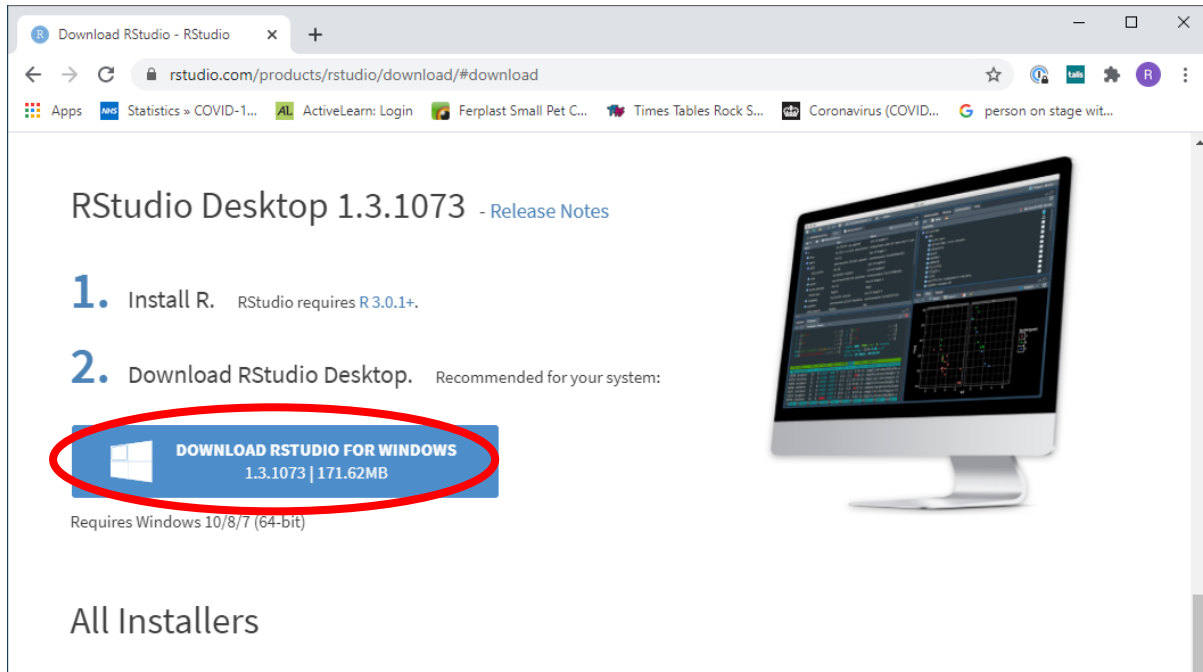
3. Select Download R for Windows. This will download an R-\*\*\*.exe file (where the \*\*\* will vary depending on the current version of R).



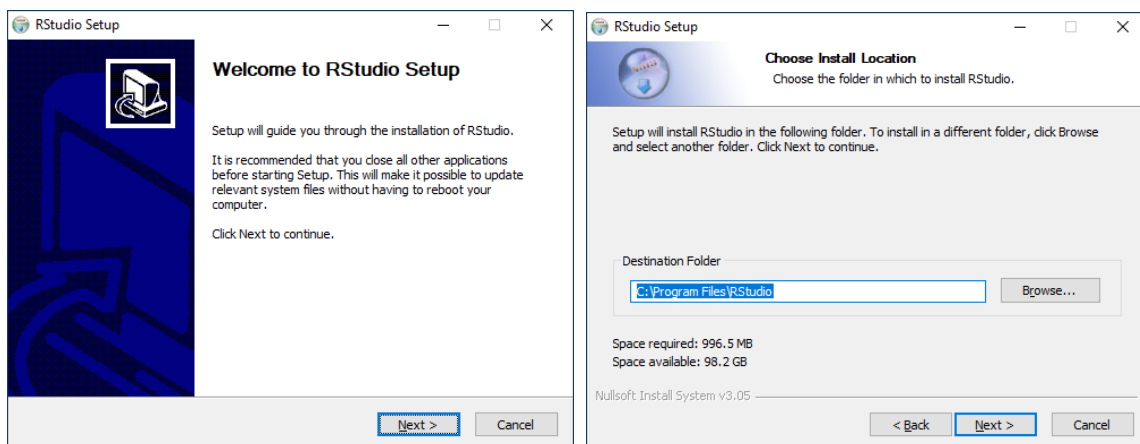
4. To finish installing R on your computer all you need to do is run the .exe file. Most of the time you will just want to accept the default options, so just click next until the process is complete.

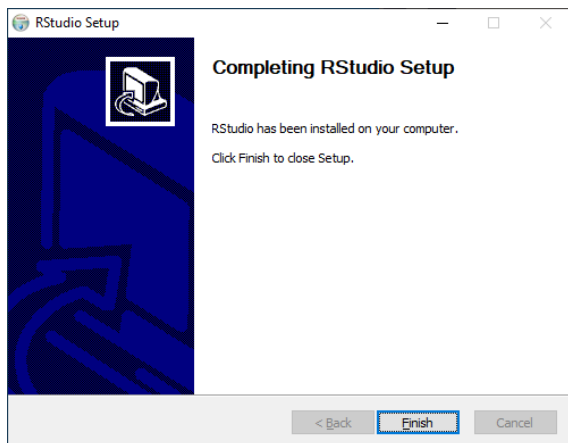
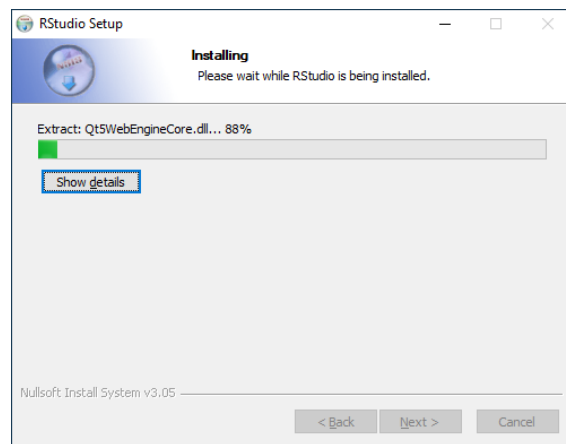
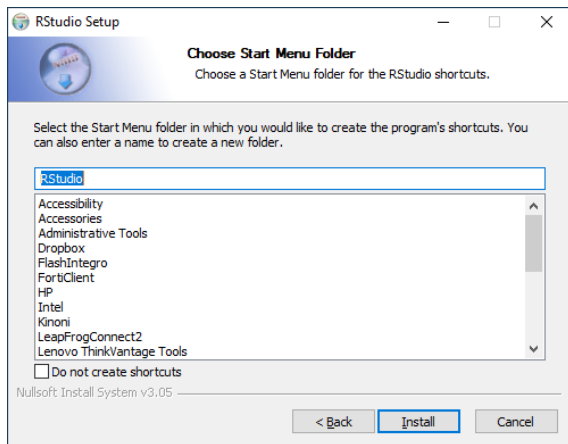


5. Now R is installed we want to install RStudio which is an Integrated Development Environment which gives you an improved environment to work with R. To install RStudio go to the RStudio downloads page:  
<https://rstudio.com/products/rstudio/download/#download> and select Download RStudio for Windows.

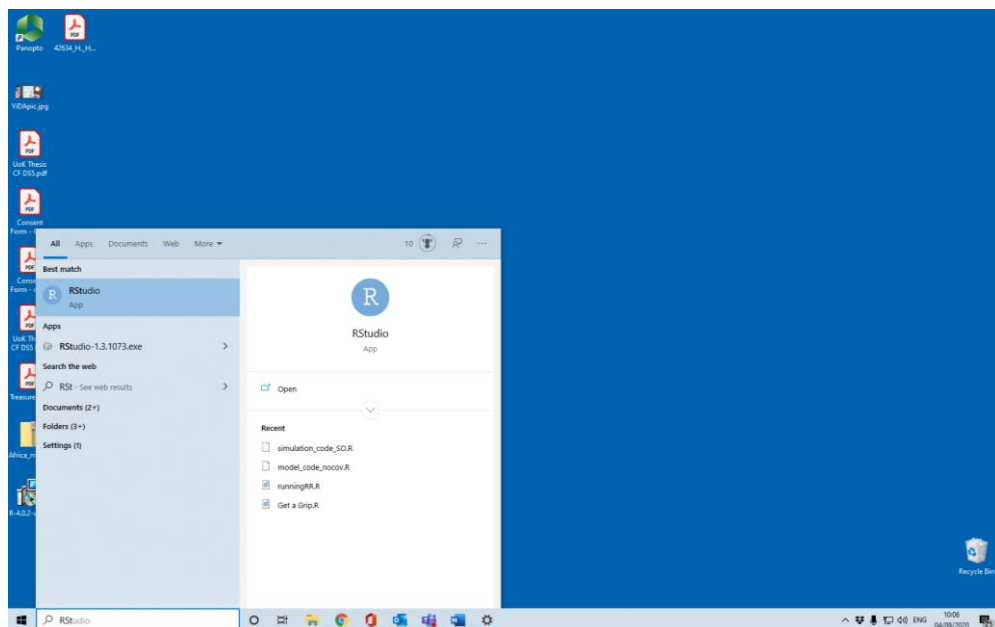


6. This will download another .exe file called RStudio-\*\*\*.exe (again the \*\*\* will vary depending on the current version of RStudio). Run this .exe programme (with the default settings, by clicking next and wait until the installation finishes. Note that RStudio requires that R is installed before you run this file (for easiest set up).





- Now you are ready to open RStudio. If you created a Desktop shortcut you can do this by double clicking on the desktop icon. Otherwise type RStudio into the Windows search bar at the bottom left hand side of your desktop.



8. When you open RStudio this will be what you see. Now the installation of R and RStudio is complete.

